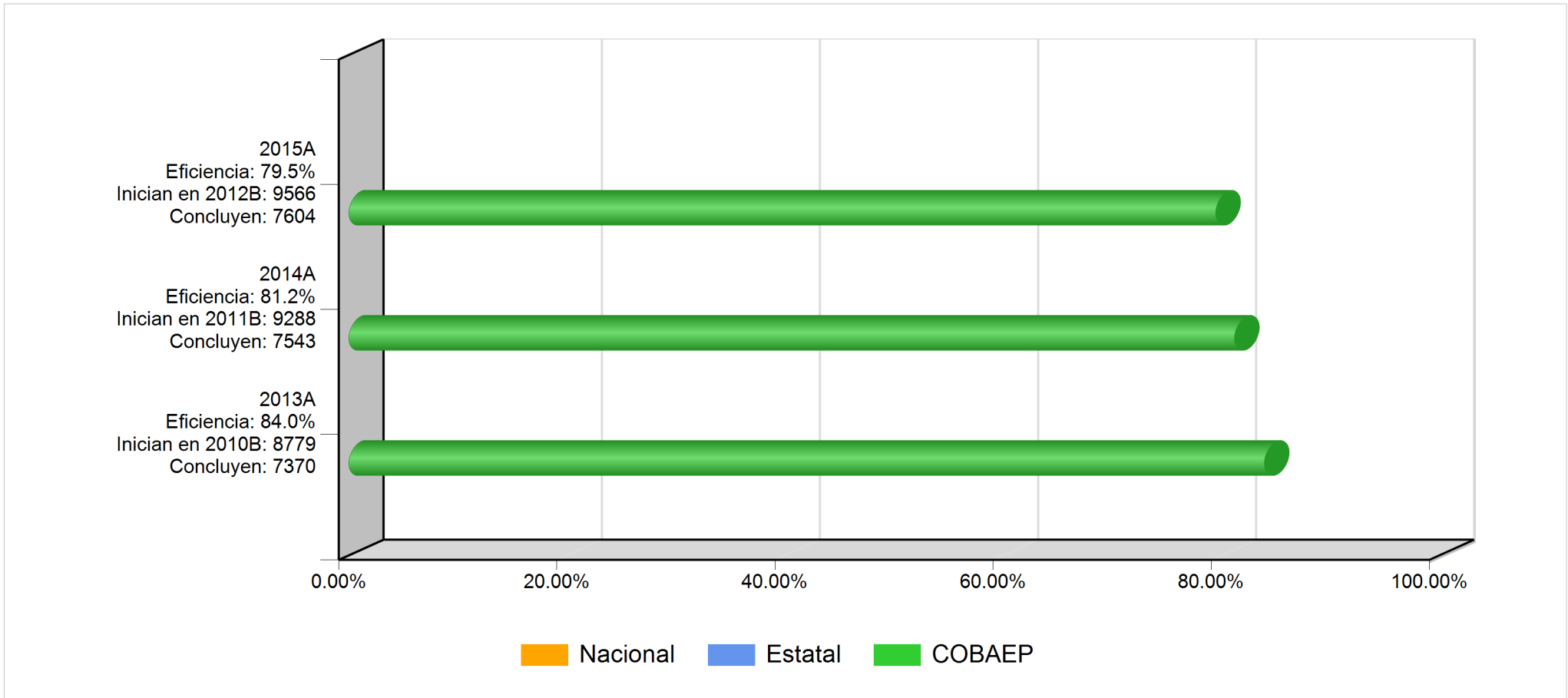
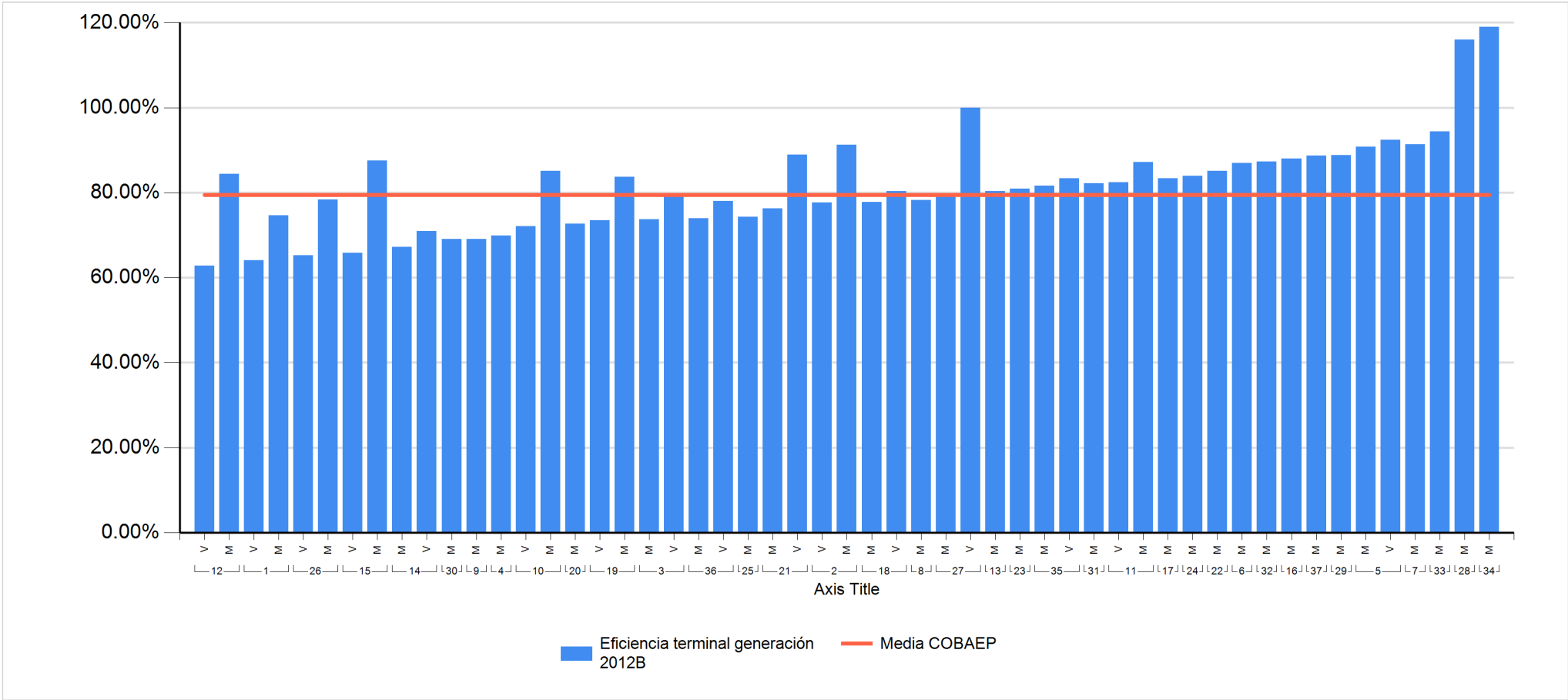


### 13. EFICIENCIA TERMINAL 2015A



### 13. EFICIENCIA TERMINAL 2015A



### 13. EFICIENCIA TERMINAL 2015A

Plantel	Nombre Corto	Turno	Matrícula Inicial 2012B	Existencia 2015A	Indicador
12	I. Matamoros	V	164	103	62.8%
1	Totimehuacan	V	270	173	64.1%
26	Chachapa	V	259	169	65.3%
15	Rivera Anaya	V	246	162	65.9%
14	La Margarita	M	223	150	67.3%
30	Tlacotepec	M	155	107	69.0%
9	Teziutlán	M	136	94	69.1%
4	Tecali	M	166	116	69.9%
14	La Margarita	V	224	159	71.0%
10	Huauchinango	V	43	31	72.1%
20	Romero Vargas	M	267	194	72.7%
19	Acatzingo	V	192	141	73.4%
3	San Jerónimo C.	M	274	202	73.7%
36	Villa Frontera	M	169	125	74.0%
25	Libres	M	300	223	74.3%
1	Totimehuacan	M	292	218	74.7%
21	Loma Bella	M	324	247	76.2%
2	Angelópolis	V	148	115	77.7%
18	Xalmimilulco	M	247	192	77.7%
36	Villa Frontera	V	91	71	78.0%
8	Tehuacán	M	317	248	78.2%
26	Chachapa	M	259	203	78.4%
27	Zaragoza	M	183	145	79.2%
3	San Jerónimo C.	V	282	225	79.8%

### 13. EFICIENCIA TERMINAL 2015A

18	Xalmimilulco	V	51	41	80.4%
13	Xoxtla	M	199	160	80.4%
23	Zacatlán	M	305	247	81.0%
35	Chilchotla	M	38	31	81.6%
31	Zacaola	M	73	60	82.2%
11	Xicotepec	V	177	146	82.5%
35	Chilchotla	V	18	15	83.3%
17	Tlatlauquitepec	M	217	181	83.4%
19	Acatzingo	M	251	210	83.7%
24	Zapotitlán	M	50	42	84.0%
12	I. Matamoros	M	179	151	84.4%
10	Huauchinango	M	289	246	85.1%
22	Cd. Serdán	M	128	109	85.2%
6	Ixcaquixtla	M	223	194	87.0%
11	Xicotepec	M	219	191	87.2%
32	Coltzingo	M	102	89	87.3%
15	Rivera Anaya	M	250	219	87.6%
16	Tlachichuca	M	167	147	88.0%
37	Atempan	M	53	47	88.7%
29	Tetela	M	98	87	88.8%
21	Loma Bella	V	272	242	89.0%
5	Sn. Martín Tex.	M	249	226	90.8%
2	Angelópolis	M	274	250	91.2%
7	Chiautla	M	70	64	91.4%
5	Sn. Martín Tex.	V	239	221	92.5%
33	Pahuatlán	M	54	51	94.4%

### 13. EFICIENCIA TERMINAL 2015A

27	Zaragoza	V	0	19	100.0%
28	Atlixco	M	69	80	115.9%
34	Acateno	M	21	25	119.0%
<b>TOTAL</b>			<b>9566</b>	<b>7604</b>	<b>79.5%</b>