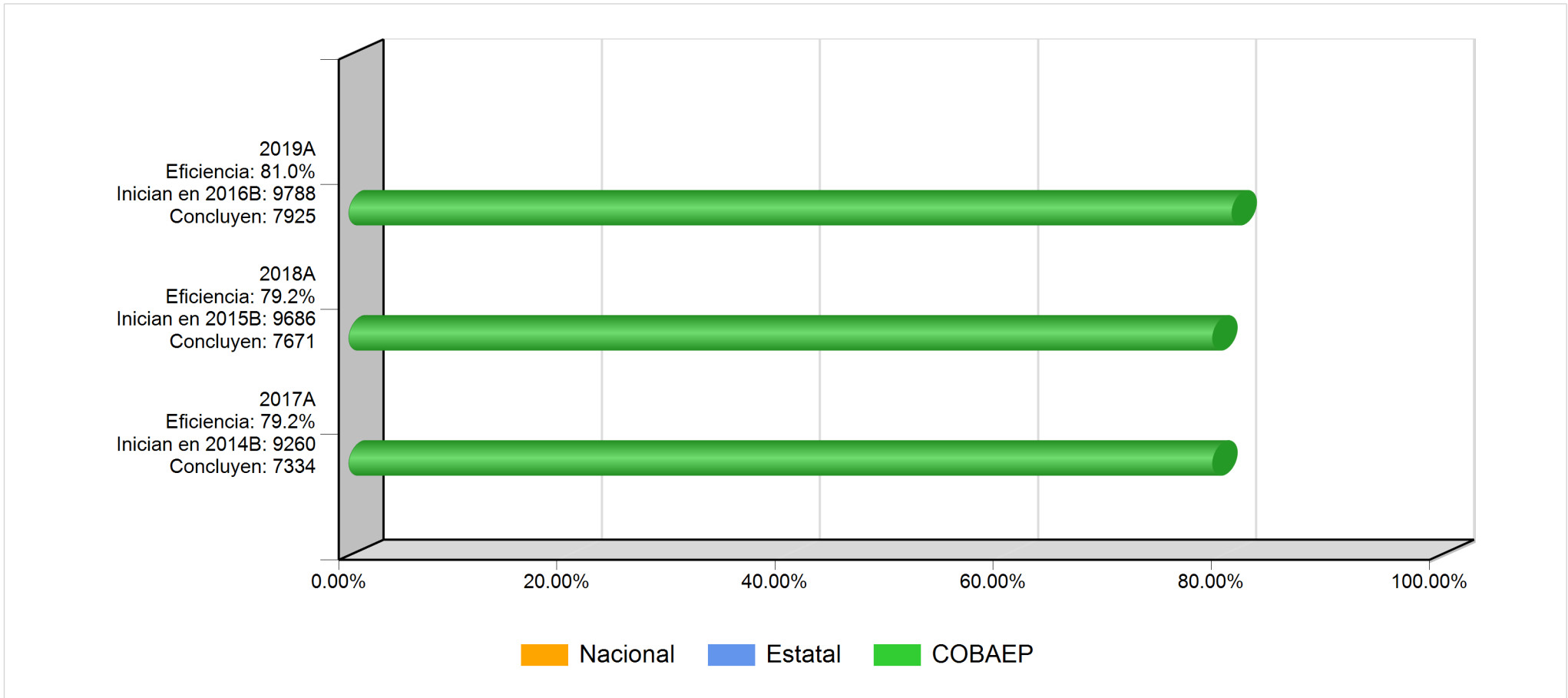
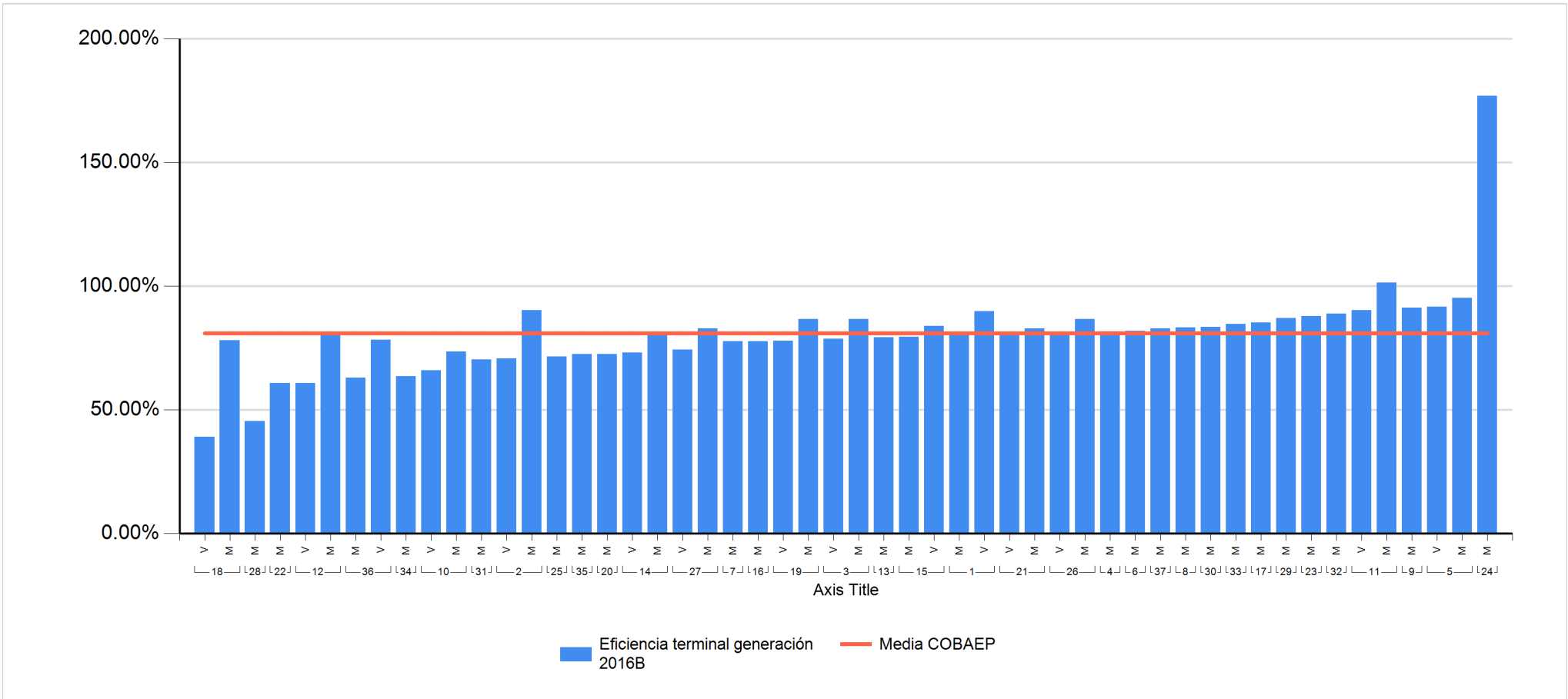


13. EFICIENCIA TERMINAL 2019A



13. EFICIENCIA TERMINAL 2019A



13. EFICIENCIA TERMINAL 2019A

Plantel	Nombre Corto	Turno	Matrícula Inicial 2016B	Existencia 2019A	Indicador
18	Xalmimilulco	V	46	18	39.1%
28	Atlixco	M	143	65	45.5%
22	Cd. Serdán	M	181	110	60.8%
12	I. Matamoros	V	181	110	60.8%
36	Villa Frontera	M	143	90	62.9%
34	Acateno	M	22	14	63.6%
10	Huauchinango	V	44	29	65.9%
31	Zacaola	M	98	69	70.4%
2	Angelópolis	V	208	147	70.7%
25	Libres	M	243	174	71.6%
35	Chilchotla	M	80	58	72.5%
20	Romero Vargas	M	244	177	72.5%
14	La Margarita	V	204	149	73.0%
10	Huauchinango	M	303	223	73.6%
27	Zaragoza	V	39	29	74.4%
7	Chiautla	M	99	77	77.8%
16	Tlachichuca	M	198	154	77.8%
19	Acatzingo	V	248	193	77.8%
18	Xalmimilulco	M	255	199	78.0%
36	Villa Frontera	V	97	76	78.4%
3	San Jerónimo C.	V	263	207	78.7%
13	Xoxtla	M	188	149	79.3%
15	Rivera Anaya	M	267	212	79.4%
1	Totimehuacan	M	297	240	80.8%

13. EFICIENCIA TERMINAL 2019A

21	Loma Bella	V	298	241	80.9%
12	I. Matamoros	M	178	144	80.9%
26	Chachapa	V	236	192	81.4%
14	La Margarita	M	216	176	81.5%
4	Tecali	M	174	142	81.6%
6	Ixcaquixtla	M	222	182	82.0%
27	Zaragoza	M	181	150	82.9%
21	Loma Bella	M	299	248	82.9%
37	Atempan	M	47	39	83.0%
8	Tehuacán	M	299	249	83.3%
30	Tlacotepec	M	145	121	83.4%
15	Rivera Anaya	V	253	212	83.8%
33	Pahuatlán	M	39	33	84.6%
17	Tlatlauquitepec	M	273	233	85.3%
3	San Jerónimo C.	M	263	228	86.7%
26	Chachapa	M	233	202	86.7%
19	Acatzingo	M	249	216	86.7%
29	Tetela	M	100	87	87.0%
23	Zacatlán	M	282	248	87.9%
32	Coltzingo	M	99	88	88.9%
1	Totimehuacan	V	254	228	89.8%
2	Angelópolis	M	306	276	90.2%
11	Xicotepec	V	204	184	90.2%
9	Teziutlán	M	148	135	91.2%
5	Sn. Martín Tex.	V	213	195	91.5%
5	Sn. Martín Tex.	M	247	235	95.1%

13. EFICIENCIA TERMINAL 2019A

11	Xicoteppec	M	200	203	101.5%
24	Zapotitlán	M	39	69	176.9%
TOTAL			9788	7925	81.0%