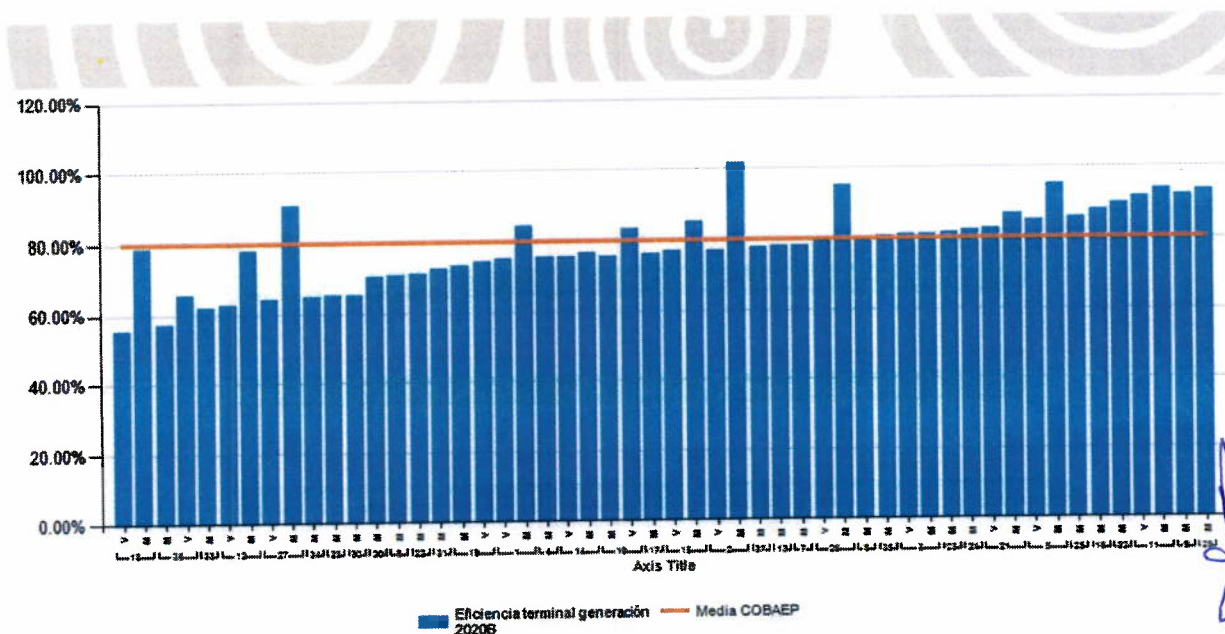
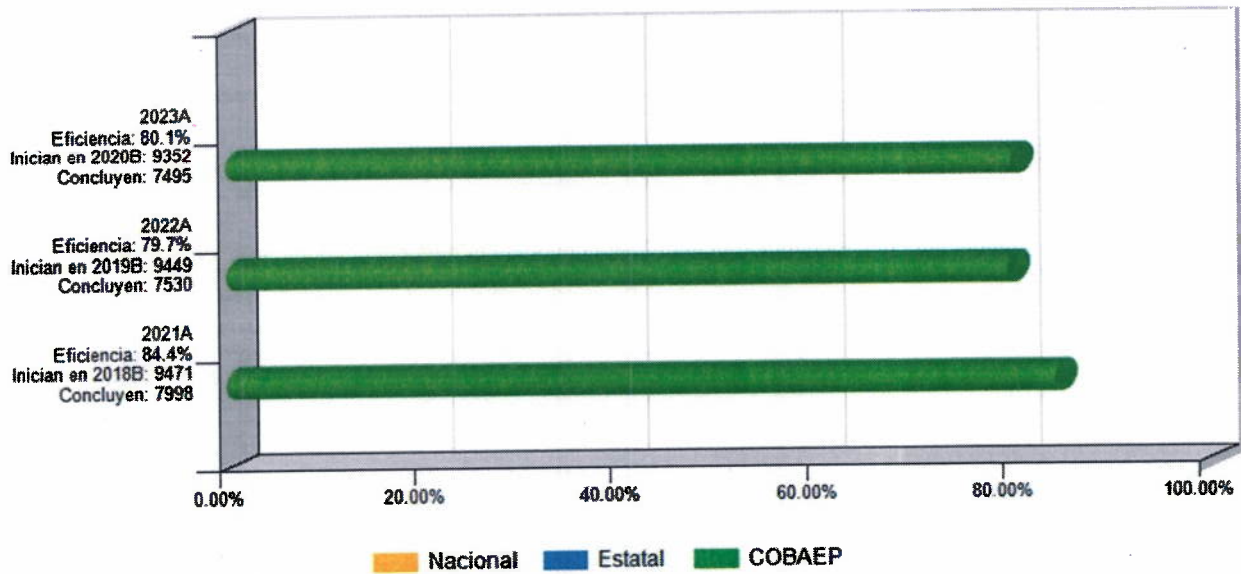


COLEGIO DE BACHILLERES DEL ESTADO DE PUEBLA

Organismo Público Descentralizado

Eficiencia Terminal : 80.1 %



[Handwritten signature]

COLEGIO DE BACHILLERES DEL ESTADO DE PUEBLA
Organismo Público Descentralizado

Plantel	Nombre Corto	Turno	Matrícula Inicial 2020B	Existencia 2023A	Indicador
18	Xalmimilulco	V	54	30	55.6%
36	Villa Frontera	M	152	87	57.2%
33	Pahuatlán	M	45	28	62.2%
12	I. Matamoros	V	129	81	62.8%
27	Zaragoza	V	59	38	64.4%
34	Acateno	M	20	13	65.0%
28	Atlixco	M	115	75	65.2%
30	Tlacotepec	M	138	90	65.2%
36	Villa Frontera	V	96	63	65.6%
20	Romero Vargas	M	250	176	70.4%
6	Ixcaquixtla	M	206	146	70.9%
22	Cd. Serdán	M	164	117	71.3%
31	Zacaola	M	70	51	72.9%
19	Acatzingo	M	247	181	73.3%
19	Acatzingo	V	237	177	74.7%
1	Totimihuacan	V	243	183	75.3%
4	Tecali	M	204	154	75.5%
14	La Margarita	V	204	154	75.5%
10	Huachinango	M	231	175	75.8%
17	Tlatlauquitepec	M	240	183	76.3%
14	La Margarita	M	180	138	76.7%
15	Rivera Anaya	V	239	184	77.0%
2	Angelópolis	V	135	104	77.0%
37	Atempan	M	81	63	77.8%
13	Xoxtla	M	200	156	78.0%
7	Chiautla	M	114	89	78.1%
12	I. Matamoros	M	161	126	78.3%
18	Xalmimilulco	M	210	166	79.0%
26	Chachapa	V	219	175	79.9%
8	Tehuacán	M	365	292	80.0%
35	Chilchotla	M	88	71	80.7%
3	San Jerónimo C.	V	257	208	80.9%
3	San Jerónimo C.	M	253	205	81.0%
23	Zacatlán	M	282	230	81.6%
24	Zapotitlán	M	89	73	82.0%
21	Loma Bella	V	282	233	82.6%
10	Huachinango	V	30	25	83.3%
1	Totimihuacan	M	248	209	84.3%
5	Sn. Martín Tex.	V	242	205	84.7%
15	Rivera Anaya	M	234	199	85.0%
25	Libres	M	296	253	85.5%
21	Loma Bella	M	275	238	86.5%
16	Tlachichuca	M	161	141	87.6%
32	Coltzingo	M	105	94	89.5%
27	Zaragoza	M	183	166	90.7%
11	Xicoteppec	V	200	183	91.5%
9	Teziutlán	M	131	120	91.6%
29	Tetela	M	101	94	93.1%
11	Xicoteppec	M	200	187	93.5%
26	Chachapa	M	216	205	94.9%
5	Sn. Martín Tex.	M	258	245	95.0%
2	Angelópolis	M	213	216	101.4%
TOTAL			9352	7495	80.1%